

Phase Mite 2-INCH VERTICAL Shifting Laser Plano-Interferometer

Model 2VP Phase Interferometer with **Durango** Universal Interferometry Software
 Piezo-electric Phase-Shifters
 Rugged Construction
 Vertical orientation for ease of use
 2-inch aperture (50.8 mm)
 1/20 wave fused silica reference flat
 Dithered illumination for sharp images that are speckle-free
 Pupil imaging: continuous Zoom
 Integral tip/tilt table
 Live interferogram on computer monitor
 High resolution CCD camera:

768 (H) x 494(V) pixels
 HeNe Laser operating at 632.8 nm
 Tilt-Table diameter 6 in. (152.4 mm)
 Max. sample thickness: 8 in. (203 mm)
 Controls:

- Illumination
- Zoom
- Focus

Dimensions (L x W x H):
 14.2 x 9 x 34 inches
 Weight: 40 lb. (18.1 kg)
 Power requirements: 115 Volts 60 Hz or 250 Volts 50 Hz
 3 GHz HT Intel Pentium 4 computers
 17-inch TFT Flat Panel Monitor
 National Instruments PCI-6024E data acquisition board
 National Instruments PCI-1409 image acquisition board



Durango is a trademark of Diffraction International
 Visit their web site at www.diffraction.com to download **Free Durango** software.

Pentium is a registered trademark of Intel Corp.



9530 Topanga Canyon Blvd., Chatsworth, CA 91311
 Phone: (818) 700-1263 Fax: (818) 700-1627

Email: techinfo@grahamoptical.com
 Web: www.grahamoptical.com

Over the past 14 years, one of our most popular interferometers has been the little **Fringe Mite**. With the availability of high performance Software, most notably **Durango**, Graham has reconfigured this interferometer as a Phase-Shifting Interferometer — our new **Phase Mite!** Rest assured, that the **Fringe Mite** is still be available for those who simply need the lowest cost, high performance interferometer in its class.

Like its predecessor, the **Fringe Mite**, its 1/20 wave fused silica reference flat, Zoom optics, high resolution CCD camera, and now with **Phase-Shifting capability**, the **Phase Mite** provides the higher magnification that is so important when evaluating small parts.

Vertical format

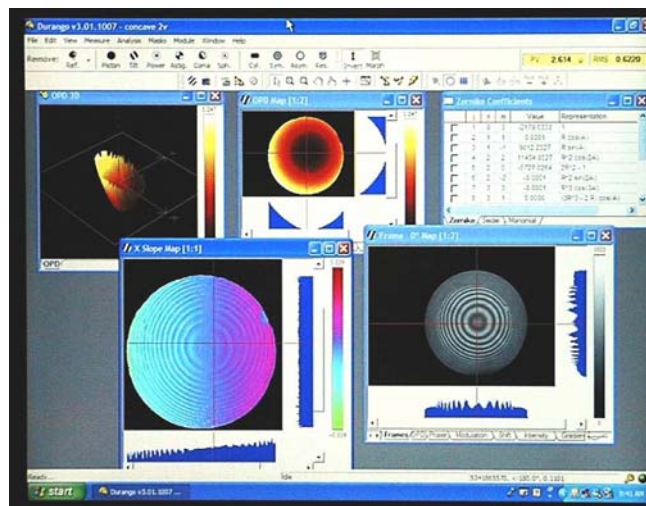
The vertical format of the new **Phase Mite** offers the ultimate in convenience and ideally suited for a wide variety of applications from small precision lapping and optical fabrication operations to the quality control departments and R & D laboratories of large industrial users. The large 8-inch gap between the reference surface and the integral tilt-table allows the **Phase Mite** to accommodate test pieces such as long laser rods, gauge blocks and optical assemblies. In operation, test pieces are simply placed upon the tilt table with no need to mount them, resulting in very substantial time savings as well as the elimination of the mounting accessories normally required when using horizontal interferometers.

Small footprint — big value!

With its compact 10" x 14" footprint, simplicity, and affordable price, our unique little **Phase Mite** offers the highest value of any small aperture, Phase-Shifting, Fizeau interferometer available today. The instrument is designed for the rapid and accurate measurement and visualization of surface flatness utilizing Diffraction International's state-of-the-art **Durango Universal Interferometry Software**.

Phase Shifting Interferometry with the Phase Mite

The **Phase Mite Model 2VP** system consists of the interferometer itself together with **Durango** Software and Hardware* installed in a 3 GHz HT Intel Pentium 4 computer with a 17-inch TFT Flat Panel monitor



Send us some of your test samples. We will be glad to measure them for you using the **Phase Mite** and **Durango** and we'll send you a complete set of reports and graphics by e-mail.

For current prices, delivery and further information, contact us today.